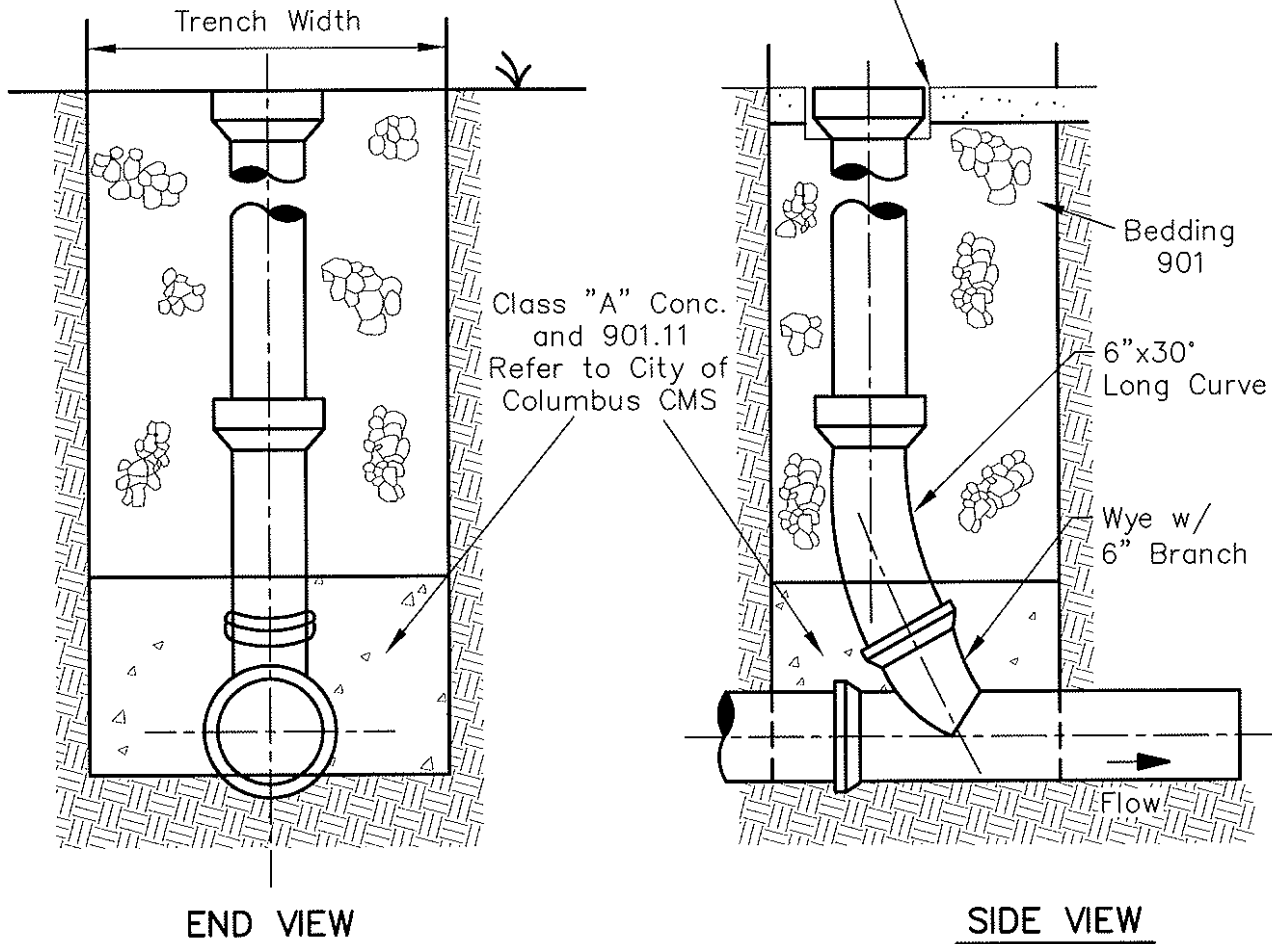


**NOTE:**

Pipe materials shall be the same material fitting or with a compatible adapter as the main sewer or in accordance with 914.02.

For cleanouts that terminate in paved areas, a frame and cover (East Jordan 1578 or approved equal) shall be used in addition to manufacturers cap/plug.



	STANDARD DIMENSIONS FOR TYPICAL CLEANOUT	CITY OF REYNOLDSBURG, OHIO	
		STANDARD CONSTRUCTION DRAWING	
		Rev	Date 04-09-07