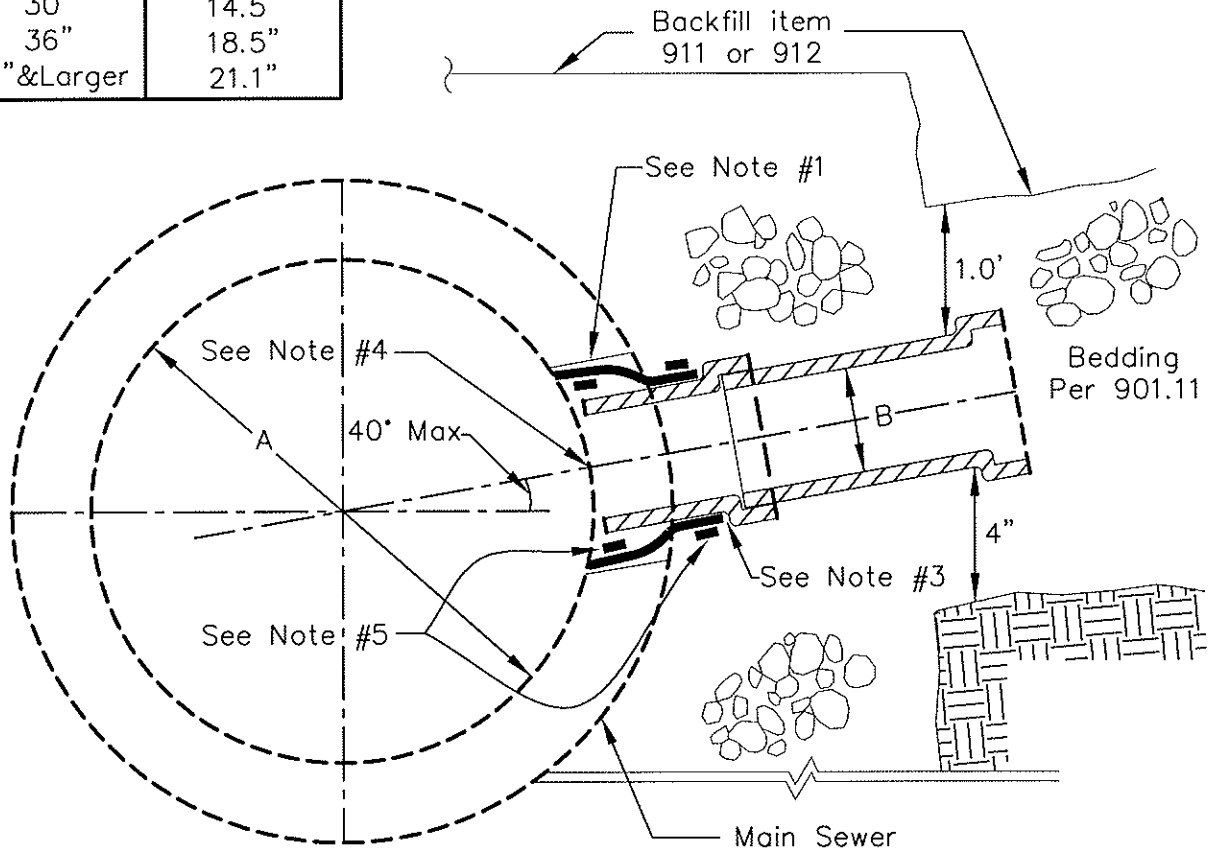


NOTES:

1. The penetration in the main sewer shall be cored for the diameter required of the insert-a-tee (or approved equal) flexible connector.
2. Pipe materials shall be in conformance with 901.02.
3. Beginning of bell section of stub pipe to be flush with end of flexible connector.
4. Stub pipe shall not extend into main sewer.
5. Internal and external clamps and hardware to be stainless steel.
6. Minimum distance from centerline of main sanitary sewer to first manhole on lateral—25 feet; maximum 50 feet.

A Dia.(ID)	B Dia.(OD)Max
30"	14.5"
36"	18.5"
42" & Larger	21.1"



STANDARD DIMENSIONS
FOR
BLIND CONNECTION DETAIL
For 15" (nom.) & smaller
Lateral Connections to
Existing Sanitary
Sewers 30" & Larger

**CITY OF
REYNOLDSBURG, OHIO**

STANDARD
CONSTRUCTION DRAWING

Rev.	Date	Dwg. No.
	03-21-07	R-71